

MS200 & MS202 Portable & Permanent Monorail Scales



Measurement
Canada

Standard Features

- 8" long live rail designed to weigh one trolley at a time
- 750 lb x .5 lb resolution in both portable and permanent models
- Available for rail sizes 3/8" x 2 1/2" or 1/2" x 2 1/2"
- Requires less than 41" of straight rail to install (14" between rail hangers for permanent model)
- Zinc-plated, steel construction
- High accuracy, stainless steel load cell
- 25 ft of load cell cable for flexible installation
- Slightly recessed live rail for the trolley roller provides stable weighments

Specifications

MS200/MS202 CONSTRUCTION:

Zinc-plated steel construction, stainless steel hardware

LOAD CELL SPECIFICATIONS

LOAD CELL CONSTRUCTION:

Stainless steel construction

EXCITATION:

10 VD

BRIDGE RESISTANCE:

350 ohms nominal

RATED OUTPUT:

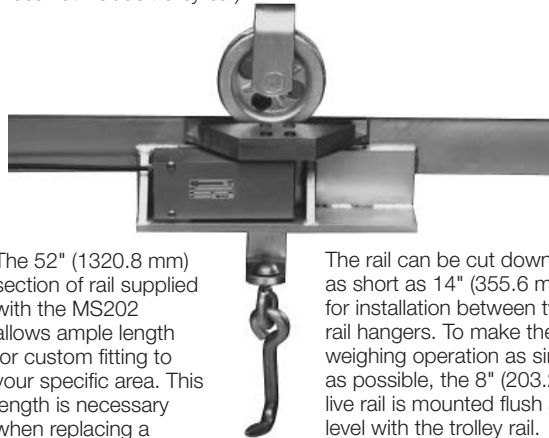
2 mV/V

NONLINEARITY:

0.03% full scale

MS202 PERMANENT MONORAIL SCALE

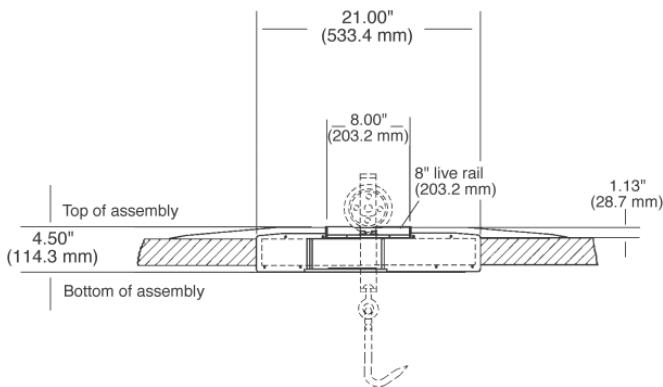
(Does not include trolley bar)



The 52" (1320.8 mm) section of rail supplied with the MS202 allows ample length for custom fitting to your specific area. This length is necessary when replacing a mechanical lever system.

The rail can be cut down to as short as 14" (355.6 mm) for installation between two rail hangers. To make the weighing operation as simple as possible, the 8" (203.2 mm) live rail is mounted flush and level with the trolley rail.

MS200/MS202 DIMENSIONS



Specifications subject to change without notice.