

TekLynx® LabelView™ Pro/Gold Bar Code Label Software



Standard Features

LabelView Pro:

- True Type fonts easily added
- Supports color PCX, BMP, TIFF, JPEG, GIF and TGA graphical formats
- Generate serial numbers
- Date and time stamps
- Paragraph feature
- Database merge
- Print over 25 bar codes for virtually any industry
- Password security
- Use data from any ODBC data format including Access™, Excel™, Lotus™, and ASCII
- Open label preview
- Preview pictures
- Database editor
- Batch printing

LabelView Gold has all the above features, plus:

- Third-party integration using DDE, Command file, Datawatch and ComWatch
- Audit reporting
- Scale can be connected through Command File

Accessories

Specifications

SYSTEM REQUIREMENTS:

IBM compatible, eight megabytes of RAM 10 megabytes of hard disk space, one parallel and serial port
For Windows 98SE, Me, NT 4.0, 2000, XP or Windows Service 2003.

GRAPHICS:

Supports color, PCX, BMP, TIFF, JPEG, GIF & TGA graphical formats. Scale to any size, rotate in four directions

DATABASE MERGE:

Batch printing; print all records in a database, a range of records, or a single record; sort on any field in a database, database picture, and/or paragraph files

DATABASE MANAGER:

Create/modify databases, (field types) (character, numeric, date, logical, memo) search for records, index on any field, import/export to ASCII or DBF, DBASE III, IV compatible, edit ODBC Data

TEXT:

Print True Type fonts on any supported printer, rotate in four directions, reverse printing (white on black), increment/decrement, justification (left, right, center) move, copy, delete groups of fields, non-printing fields.
Multiple data sources: fixed, print-time entry, database merge, serial numbers, date stamp, sell-by-date, time stamp, linked/copied from other fields

BAR CODES:

Set bar width ratio, rotate in four directions. Multiple data sources: fixed, print-time entry, database merge, serial numbers, linked/copied from other fields

SYMBOLOGIES:

UPC-A
UPC-E, UPC +2 and +5
EAN-8, EAN-13
Code 39, Code 39 mod 43
Code 93 Codabar
Int. 2 of 5, Int. 2 of 5 mod 10
Code 128-A, B, C
UCC 128, EAN 128
Postnet

2-D Symbolologies:

PDF 417
Maxicode
Data-Matrix

PASSWORDS:

User names, user passwords
Rights: design labels, print labels, modify serial numbers, use database editor, use text editor, modify label inventory

LABEL INVENTORY CONTROL:

Tracks quantity on-hand
Definable re-order points
Low stock level warning messages

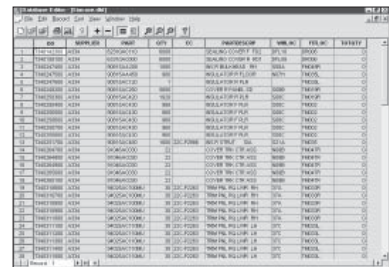
LANGUAGES:

English, French, Spanish, Italian, German, Dutch, Chinese, Korean, and Portuguese. User translatable.

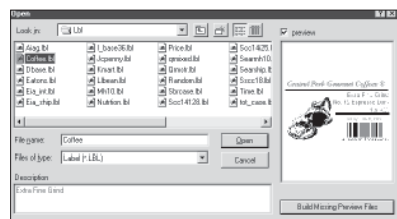
SUPPORTED PRINTERS:

Drivers to support most label printers and any printer with a Windows driver.
See Datamax and Eltron label printers.

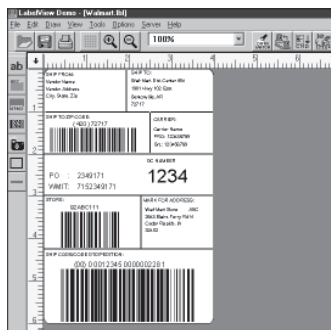
LabelView supports any laser and dot-matrix Windows® printer driver.



Database editor



Open label preview



Compliance label sample

Windows is a registered trademark of Microsoft Corporation