

WinWedge® TAL Software Bar Code Label Software



Standard Features

- Input scale or instrument data directly into Excel™, Access™, statistical software, LIMS, MMIs, any Windows® application
- Transfers RS-232 data quickly, accurately and formatted to your exact specifications
- Powerful DDE options for collecting data from multiple devices simultaneously
- Extremely easy to set-up and use

32 Pro, TCP/Wedge additional features:

- Support for even the most complex devices and serial I/O with advanced data parsing, filtering, formatting and translation
- Support for TCP/IP as well as RS-232 data collection and I/O
- More advanced device control options
- Additional features such as math functions and virtual instrument mode
- Five RS-232 and TCP/IP communications software products provided free of charge

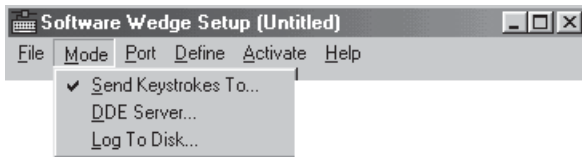
Specifications

SYSTEM REQUIREMENTS:
Any version of Windows®
Any Windows® PC
4 MB of RAM
2 MB of hard disk space

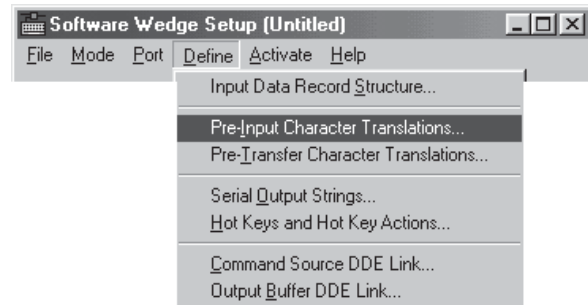
COMMUNICATIONS:
WinWedge can collect data on any serial port (RS-232 or RS-485) and even on multiple ports simultaneously. Also supports full device control.

SOFTWARE SUPPORT:
Rice Lake Weighing Systems offers field software support for our software packages. Contact our Service Department for software support. Software support is a chargeable service.

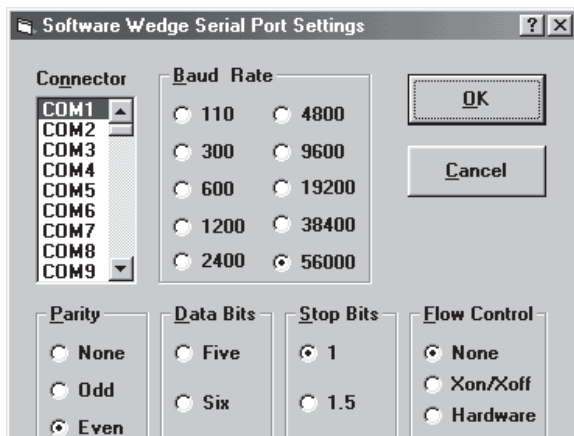
1. Select how you want the data collected:



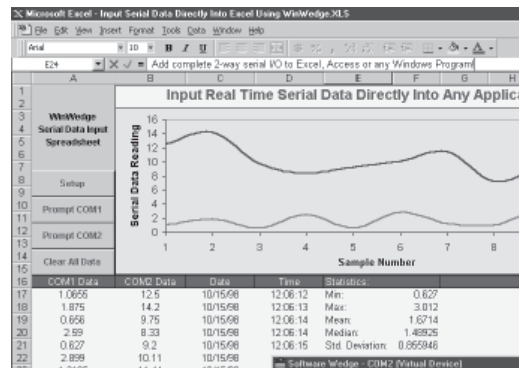
2. Choose the communication parameters for your serial device:



3. Define how you want the serial data to be parsed, filtered, and translated:



4. Activate WinWedge and watch your serial data "pop" into your application:



Windows is a registered trademark of Microsoft Corporation